



Council of the Institute of Sisters of Mercy of Australia and Papua New Guinea (ISMAPNG)

*Quality Health and Safety Coordinator*

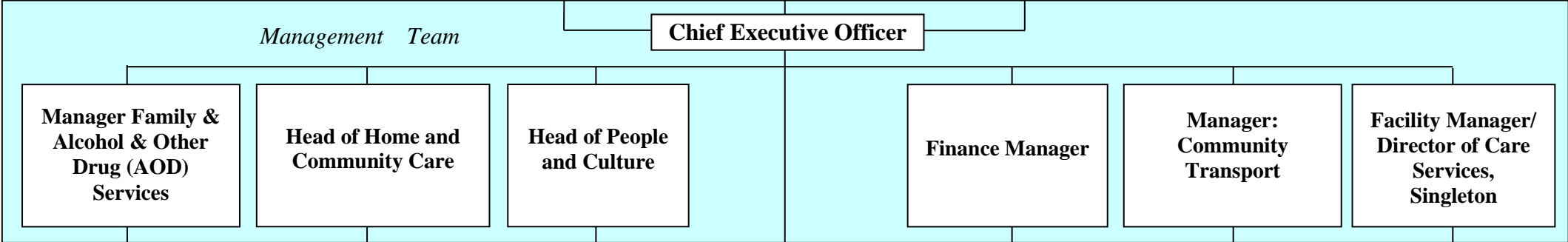
Board of Directors

*Community Housing Advisory Group*

*Mission, Values & Culture Committee*

*McAuley Education Fund Committee*

*Finance and Audit Committee*



- McAuley Family & Alcohol & Other Drug (AOD) Services**
- Brighter Futures Parenting Program
  - Brighton House and Bronte House
  - Holyoake
  - McAuley Outreach Service, - AOD Counselling
  - SEICT Parenting Program

- Community Nursing
- Day Centres
- Home Care Packages
- Home Support Program (*Home & Community Care*)
- ISMAPNG Aged and Health Coordinators
- National Disability Insurance Scheme services
- Support Coordination Project
- Newcastle Elderly Citizen's Centre
- Wallsend Carers

- Learning and Development Coordinator

- Organisational Development
- Strategic Planning

- Accounts
- Administration
- Fleet management
- Fundraising support
- Criminal Record Checks
- Information & Communication Technology
- Payroll

- Lake Macquarie Community Transport
- Newcastle Community Transport

- Residential Aged Care Singleton**
- Residential aged care facility for 44 people
  - Four Self Care Units
  - Administration
  - Continuous Quality Improvement
  - Maintenance
  - Pastoral care